

Paloma Piano



Book One Part A

BOOK 1A - TABLE OF CONTENTS

PART A

INTRODUCTION TO MUSIC

WELCOME TO PALOMA PIANO	4
THE STAFF	6
RHYTHM AND BEAT	8
LEARNING MIDDLE C	9
BEAUTIFUL	10
BARLINES AND MEASURES	11
MERRILY WE ROLL ALONG	12
THE TAILOR	13
NOTE SPELLER 1	14

BEGINNING NOTES

THE WHOLE NOTE	16
HARVEST TIME	17
THE HOUR GLASS	19
LITTLE DANCE	20
FAR AWAY	22
LOST IN THE FOREST	23
THE SNOWBUNTING	24
NOTE SPELLER 2	26

BEGINNING BASS CLEF NOTES

BASS CLEF C D E	28
BASS CLEF C D E F G	29
A DAY AT THE BEACH	30
CARNIVAL	31
HAPPY SANTA CLAUS	33
A CLOUDY DAY	34
NOTE SPELLER 3	36

RHYTHMIC PRACTICE	38
-------------------------	----

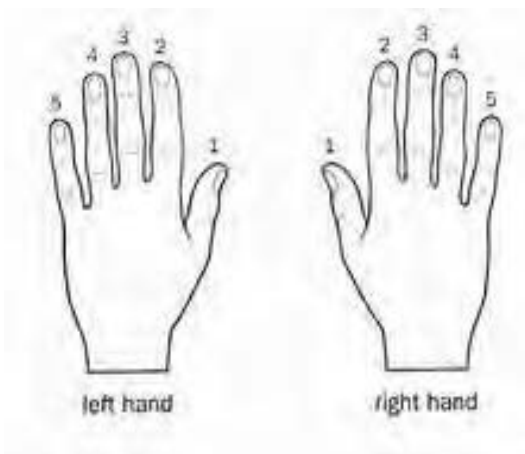
PART A

- INTRODUCTION TO MUSIC
- BEGINNING NOTES
- BEGINNING BASS CLEF NOTES



WELCOME TO PALOMA PIANO

**GOOD PIANO POSTURE
IS SITTING TALL WITH RELAXED
SHOULDERS ARMS SHOULD BE
PARALLEL TO THE KEYS**



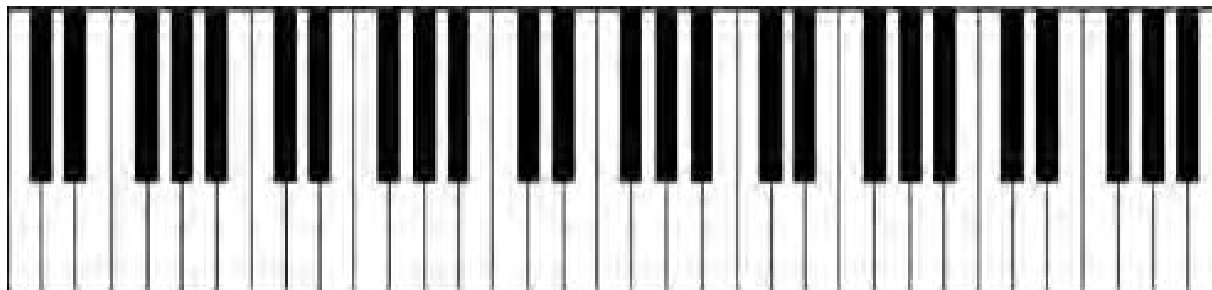
**YOUR FINGERS ARE ASSIGNED NUMBERS
FOR PLAYING THE PIANO.**

**ALWAYS KEEP YOUR HANDS RELAXED.
AND YOUR BODY RELAXED AND BALANCED.**

THE PIANO HAS BLACK KEYS AND WHITE KEYS.

THE BLACK KEYS ARE ORGANIZED INTO SETS OF TWO AND THREE.

THESE GROUPS OF BLACK KEYS ORGANIZE THE NOTES.



TAKE SOME TIME TO POINT OUT ALL OF THE GROUPS OF TWO AND THREE BLACK KEYS ON THE PIANO KEYBOARD.

THE MUSIC ALPHABET HAS 7 LETTERS

A B C D E F G

LEARN TO SAY THEM FOWARD AND BACKWARD

G F E D C B A

THESE ARE ALSO THE NAMES OF THE WHITE KEYS ON THE KEYBOARD.



THE STAFF

MUSIC IS ORGANIZED SOUND.

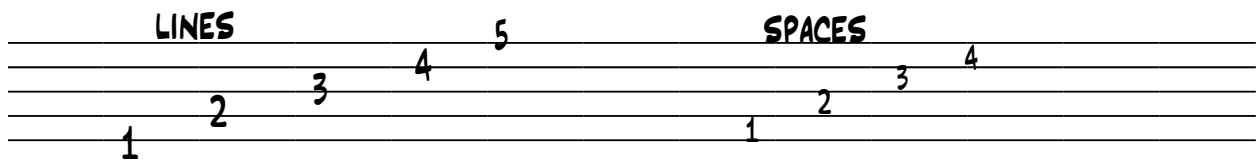
SOUND CONSISTS OF TIMBRE AND PITCH.

TIMBRE IS THE UNIQUE QUALITY OF EACH SOUND, VOICE OR INSTRUMENT.

PITCH IS DETERMINED BY THE SPEED OF THE SOUND'S VIBRATION, THAT IS; HIGH OR LOW;

**THE MUSIC ALPHABET HAS 7 LETTERS A, B, C, D, E, F, G
THESE ARE THE NOTES.**

THE STAFF HAS 5 LINES AND 4 SPACES.



NOTES ARE WRITTEN ON THE LINES AND IN THE SPACES ON THE STAFF.



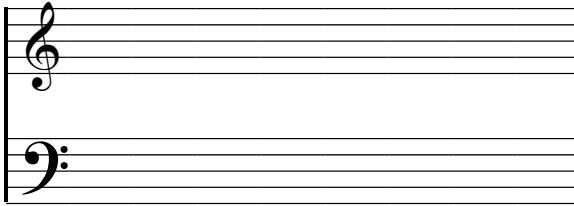
**THIS IS THE TREBLE CLEF .
IT IS PLACED ON THE STAFF AND
SHOWS HOW TO READ THE HIGHER NOTES.**



**THIS IS THE BASS CLEF .
IT IS PLACED ON THE STAFF AND
SHOWS HOW TO READ LOWER
NOTES**

PIANO MUSIC USES 2 STAFFS.

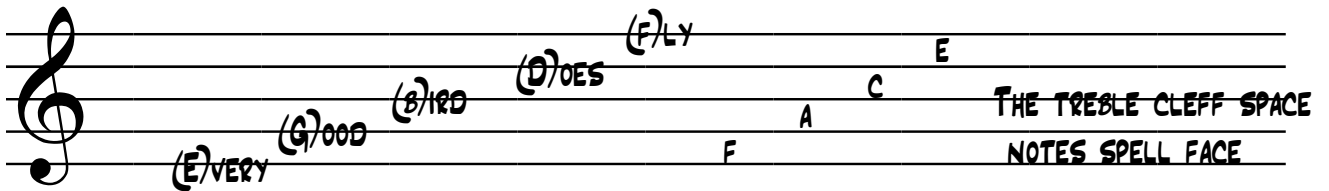
TOGETHER THEY ARE CALLED THE GRAND STAFF



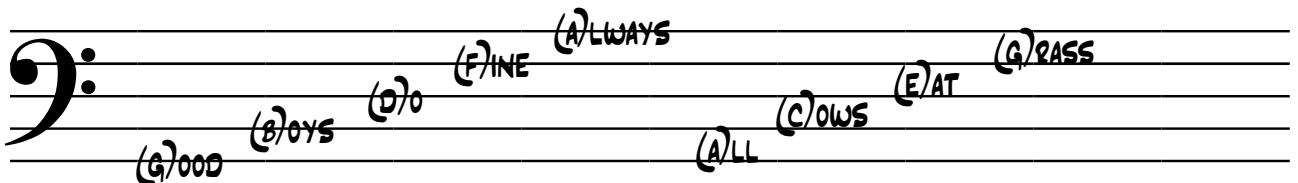
TWO STAFFS ARE NEEDED
BECAUSE THERE ARE 88 NOTES
ON THE PIANO

SOME PEOPLE USE MNEMONIC DEVICES TO REMEMBER
THE NOTES ON THE STAFF.

HERE ARE THE TREBLE CLEF NOTE NAMES



HERE ARE THE BASS CLEF NOTE NAMES



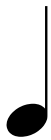
RHYTHM AND BEAT

MUSIC IS ORGANIZED SOUND...

ORGANIZED SOUND THAT MOVES THROUGH TIME AND HAS A STEADY BEAT.
THE BEAT OF THE MUSIC CAN BE FAST, MEDIUM OR SLOW AS LONG AS
IT IS ALWAYS STEADY.

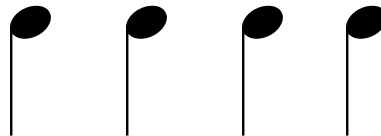
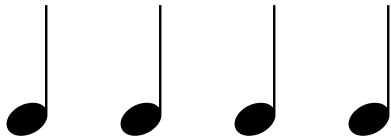
NOTES TELL US WHICH NOTES OR SOUNDS TO PLAY.
NOTES ALSO TELL US HOW LONG WE SHOULD PLAY EACH SOUND.

THE TIMING OF SOUNDS IS CALLED RHYTHM

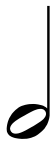


THIS IS A QUARTER NOTE
IT RECEIVES 1 BEAT.

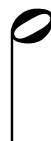
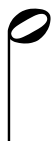
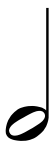
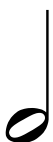
THESE NOTES ARE ALL QUARTER NOTES



THE STEMS MAY GO
UP OR DOWN.



THIS IS A HALF NOTE EACH HALF NOTE RECEIVES 2 BEATS



Learning Middle C

THIS IS MIDDLE C, IT IS CALLED MIDDLE C BECAUSE IT DIVIDES THE GRAND STAFF. THE TREBLE CLEF MIDDLE C IS ON THE TOP STAFF, THE BASS CLEF MIDDLE C IS ON THE LOWER STAFF. IT IS THE SAME NOTE.

ALL OF THESE C'S ARE QUARTER NOTES - THEY EACH RECEIVE ONE BEAT

Piano

The musical notation shows a grand staff with a treble clef on top and a bass clef on the bottom. The time signature is 4/4. The melody in the treble staff consists of four quarter notes of Middle C, followed by a whole rest, then another four quarter notes of Middle C, and finally another whole rest. The bass staff mirrors this pattern, with four quarter notes of Middle C, a whole rest, four more quarter notes of Middle C, and a final whole rest. This illustrates that Middle C is the central note that divides the grand staff.

USUALLY THE TOP STAFF IS PLAYED WITH THE RIGHT HAND AND THE LOWER STAFF IS PLAYED WITH THE LEFT HAND.

PRACTICE PLAYING MIDDLE C WITH YOUR FIRST FINGER (THE THUMB)

Pno.

The musical notation shows a grand staff with a treble clef on top and a bass clef on the bottom. The time signature is 4/4. The melody in the treble staff starts with a half note of Middle C (marked with a '5' above it), followed by a whole rest, then four quarter notes of Middle C (the first is marked with a '^' for the thumb), then two more half notes of Middle C, and finally a whole rest. The bass staff starts with a whole rest, then a half note of Middle C (marked with a '^' for the thumb), followed by a whole rest, then another half note of Middle C (marked with a '^' for the thumb), and finally a whole rest. Annotations indicate that the quarter notes receive 1 beat each and the half notes receive 2 beats each.

^THE QUARTER NOTE RECEIVES 1 BEAT.

^THE HALF NOTE RECEIVES 2 BEATS

Beautiful

THIS PIECE FEATURES THE NOTES C D AND E

PRACTICE SAYING THE NOTE NAMES BEFORE YOU PLAY.

Doreen Hall

STUDENT

Piano

4/4

C D E

1 2 3

Beau-ti - ful aut - umn rain, rinse the ground wash a - way,

THE QUARTER NOTE
RECEIVES 1 BEAT.

THE HALF NOTE RECEIVES 2 BEATS.

Pno.

5

Sum-mer's heat. Beau-ti - ful aut-umn rain make the world cool a-gain.

TEACHER DUET

Pno.

10

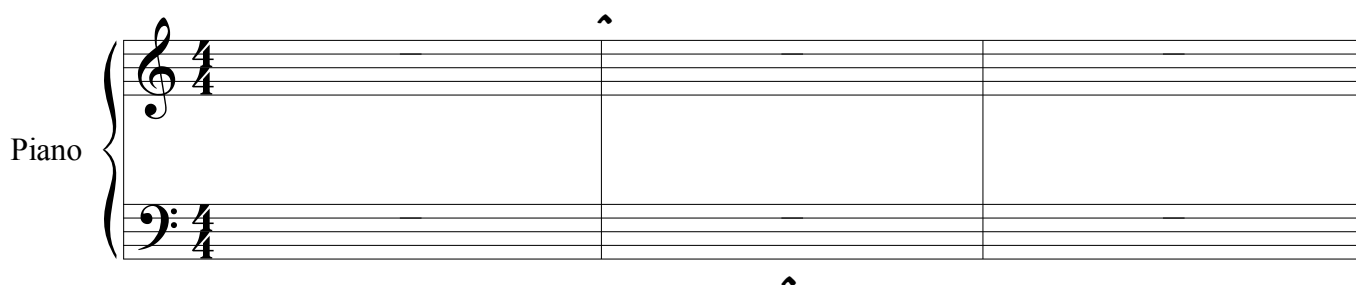
Pno.

14



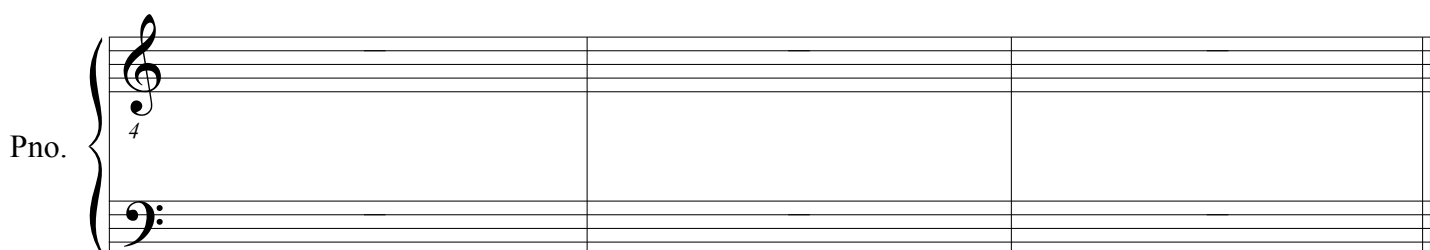
Bar Lines and Measures

THESE VERTICAL LINES ON THE STAFF ARE CALLED BAR LINES.



THE SPACE BETWEEN THE BAR LINES IS CALLED A MEASURE.

BAR LINES AND MEASURES HELP TO ORGANIZE THE MUSIC SO THAT IT CAN BE EASILY READ.



THE DOUBLE BAR LINE IS PLACED AT THE END OF A PIECE.

Merrily We Roll Along

HERE IS A LITTLE PIECE THAT USES THE THREE NOTES YOU HAVE LEARNED THUS FAR. YOUR TEACHER CAN PLAY ALONG WITH YOU USING THE DUET ON THE BOTTOM OF THE PAGE.

Traditional

STUDENT

Piano

The musical score for the Student Piano part is written in 4/4 time. It consists of four measures. The first measure has a treble clef and a key signature of one sharp (F#). The melody starts with a quarter rest, followed by a quarter note G4, a quarter note A4, and a quarter note B4. The lyrics 'Mer - ri - ly we' are written below the first measure. The second measure has a treble clef and a key signature of one sharp. The melody starts with a quarter note C5, followed by a quarter note D5, and a half note E5. The lyrics 'roll a - long,' are written below the second measure. The third measure has a treble clef and a key signature of one sharp. The melody starts with a quarter note F#5, followed by a quarter note G5, and a half note A5. The lyrics 'roll a - long,' are written below the third measure. The fourth measure has a treble clef and a key signature of one sharp. The melody starts with a quarter note B5, followed by a quarter note C6, and a half note D6. The lyrics 'roll a - long.' are written below the fourth measure. The bass line is written in the bass clef and consists of four measures, each with a whole rest. The tempo is marked 'Piano'.

Mer - ri - ly we roll a - long, roll a - long, roll a - long.

5

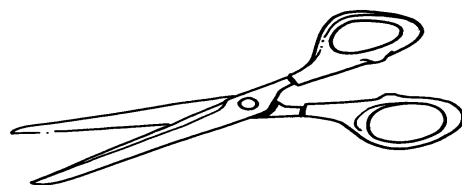
Pno.

Mer - ri - ly we roll a - long, or' the deep blue o - cean!

The musical score for the piano accompaniment is written on a grand staff with a treble and bass clef. The melody is in the treble clef, starting on a G4 and moving stepwise up to a D5, then down to a G4, and finally to a D4. The bass clef part consists of a single note, G2, in the first measure, followed by a whole rest for the remainder of the piece. The lyrics are written below the treble staff.

[illegible]

The Tailor



PRACTICE PLAYING C D AND E.

USE YOUR RIGHT HAND.

THE VERTICAL LINES ON THE STAFF ARE CALLED BAR LINES.

Doreen Hall

THE SPACE BETWEEN BAR LINES IS CALLED A MEASURE.

STUDENT

Piano

1 2 3

Watch the tai - lor working as he cuts and sews the lin - en.

Pno.

5

Seams as straight as light beams, and the stitch-es small and e - ven.

TEACHER DUET

Pno.

1

Pno.

5

WRITE IN THE NOTES NAMES
FOR THE NOTES C, D, AND E

Note Speller 1

WRITE Q FOR QUARTER NOTE
WRITE H FOR HALF NOTE

Q Q Q Q Q Q H H H

C C D D C D E

5

9

13

17

21

Note Speller 1

25

[illegible]

34

34

38

42

47

47

THE WHOLE NOTE

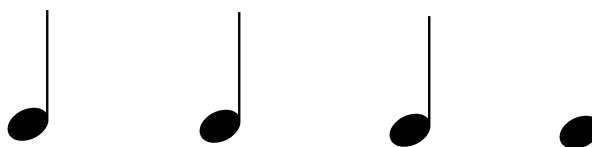


THE WHOLE NOTE RECEIVES 4 BEATS.

THINK OF IT AS A WHOLE DOLLAR WHICH HAS
4 QUARTERS AND TWO HALVES



=



=



YOU HAVE LEARNED THE NOTES C D AND E.
 NOW WE WILL ADD THE NOTE F. IT IS IN THE FIRST SPACE
 OF THE TREBLE CLEF STAFF.

Piano

THE WHOLE NOTE
RECEIVES 4 BEATS



Harvest Time

Doreen Hall

Pno.

1

4 1 4 2

Ap - ples red, corn is high, beans are green it's har - vest time.

Pno.

5

Now we work no time to rest. We reap plums and pears,

Pno.

10

ber - ries, grapes all we need at har - vest time.

Harvest Time

TEACHER DUET

1

Pno. 

7

Pno. 

TEACHER DUET ALTERNATIVE RHYTHM.

1

Pno. 

7

Pno. 



The Hour Glass

Doreen Hall

STUDENT
Piano

4 3 2 3

Six - ty min - utes that's how long it

Pno.

4

lasts. Sand is fal - ling

Pno.

7

through the ho - ur glass.

TEACHER DUET

1

Pno.

THE TREBLE CLEF SECOND LINE NOTE IS G

PRACTICE PLAYING C THROUGH G

Piano

Little Dance

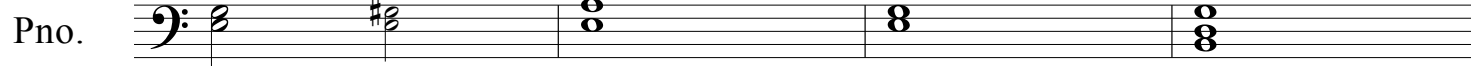
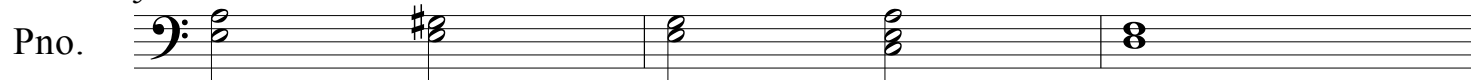
Doreen Hall

Pno.

Pno.

Pno.

Little Dance

TEACHER DUET*1**5**8*

LEARN TO PLAY THE NOTES C THROUGH G IN
THE TREBLE CLEF. SAY THE NOTE NAMES
BEFORE YOU PLAY!

Far Away

Doreen Hall

Piano

Sail a - way, far a - way. Jour - ney o'r the o - cean wide.

Pno.

Drift a - way, far a - way. I'll re - turn to you my friend.

Pno.

Though I am far a - way, soon I will be home a - gain.

TEACHER DUET

Pno.

Pno.

Pno.

Lost in the Forest

23

Doreen Hall

PRACTICE NEW NOTES F AND G

Piano

4/4

G G F F G G F F E D C

1

5 4

Pno.

Night is fal - ling, dark - ness looms. Lost in the for - est,

5

Pno.

All the sounds are er - ie now. Lost in the for - est.

9

TEACHER DUET

Pno.

13

Pno.

The Snowbunting



FROM ONE NOTE TO THE VERY NEXT NOTE
ON THE STAFF IS CALLED A "STEP". STEPS ON THE STAFF
TRANSLATE INTO STEPS ON THE KEYBOARD.

Doreen Hall

Piano

5

1

Win - ter snow is fal - ling. Snow - bunt - ing is cal - ling.

^(THE FIRST 5 NOTES STEP DOWN.)

Pno.

5

High up - on rock - y cliffs, hear the snow - bird sing - ing.

Pno.

9

La la la la loo loo. La la la la loo loo.

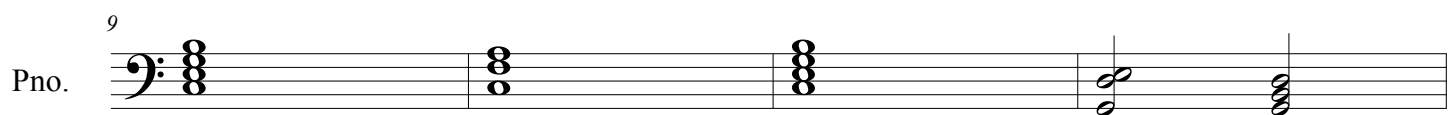
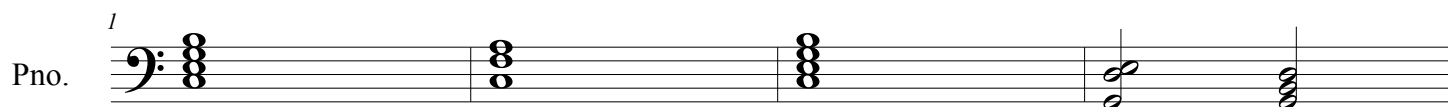
Pno.

13

High up - on rock - y cliffs. Snow - bunt - ing is sing - ing.

The Snowbunting

TEACHER DUET



WRITE THE NOTE NAMES.

Note Speller 2

WRITE Q FOR QUARTER NOTES

WRITE H FOR HALF NOTES

WRITE W FOR WHOLE NOTES

The musical notation consists of six staves, each with a treble clef and a 4/4 time signature. The first staff is pre-filled with notes and their corresponding durations and names. The notes are: G4 (quarter), F4 (quarter), E4 (quarter), D4 (quarter), C4 (quarter), D4 (quarter), E4 (quarter), F4 (quarter), G4 (half), G4 (half), and F4 (whole). The subsequent staves are empty for practice.

Staff 1: G F E D C D E F G G F

Staff 2: 6

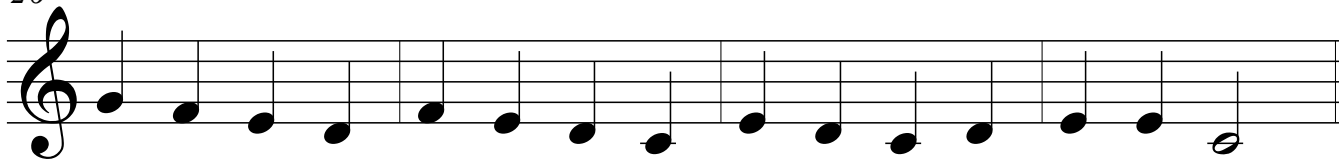
Staff 3: 10

Staff 4: 14

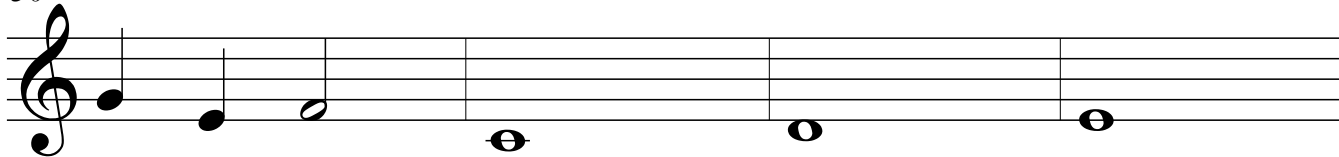
Staff 5: 18

Staff 6: 22

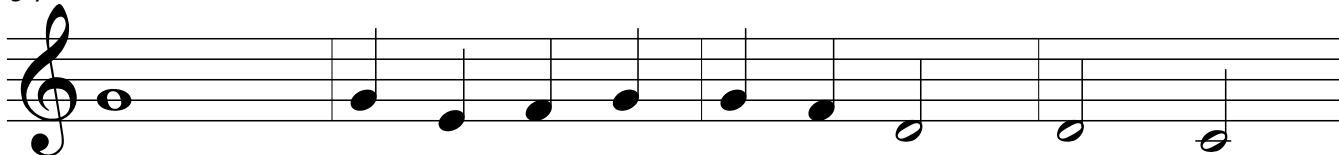
26



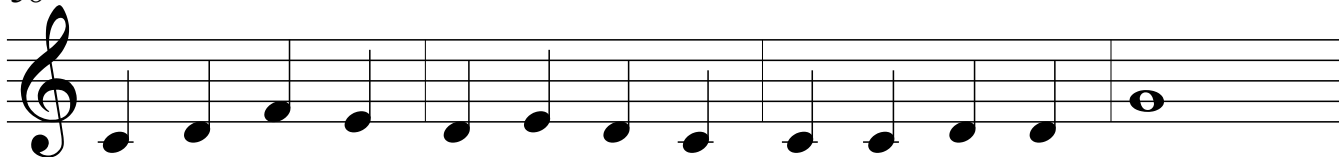
30



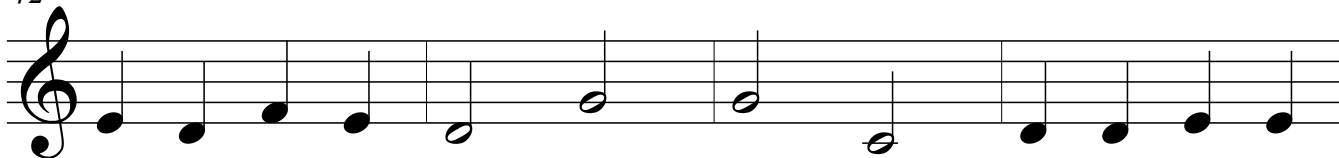
34



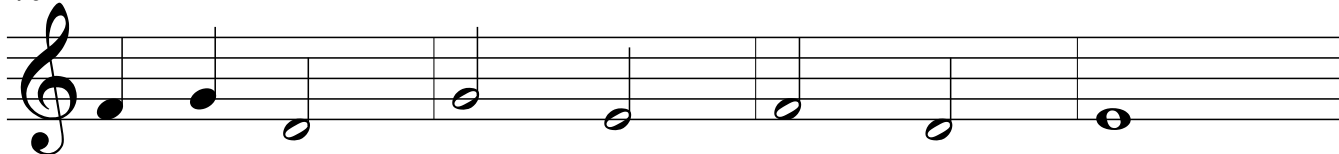
38



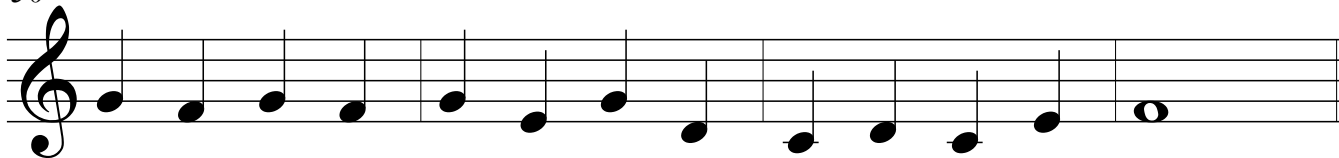
42



46



50



Bass Clef C D E

THE BASS CLEF IS USED TO INDICATE
THE LOW NOTES ON THE KEYBOARD.

LEARN THE BASS CLEF NOTES C D AND E.

PLAY THEM WITH YOUR LEFT HAND.

Piano

BASS C IS THE SECOND SPACE NOTE. D IS THE MIDDLE LINE NOTE E IS THE THIRD SPACE NOTE.

4 SAY THE NOTE NAME AS YOU PLAY.

Pno.

8

Pno.

Bass Clef C D E F G

PRACTICE THESE NOTES IN THE BASS CLEF
START WITH THE 5TH FINGER (PINKY) ON C.

REMEMBER TO COUNT AS YOU PLAY!

Piano

C D E F G G G G play the bass clef with me.

Pno.

G G play with me. We love the pi - a - no.

Pno.

C D E F G F G come and play now with me.

Carnival

PRACTICE BASS CLEF C THROUGH G

Bass clef

Doreen Hall

Piano

Car - ni - val, car - ni - val on a sun - ny Sun - day.

Pno.

Let us go to the show on a sun - ny Sun - day.

Pno.

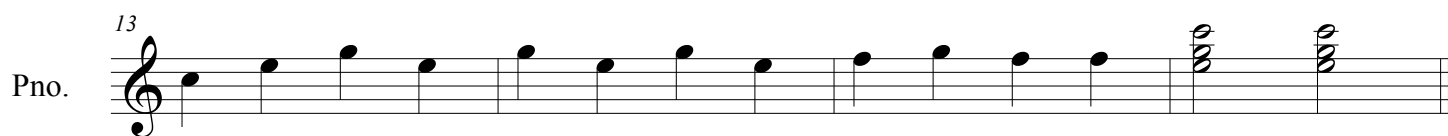
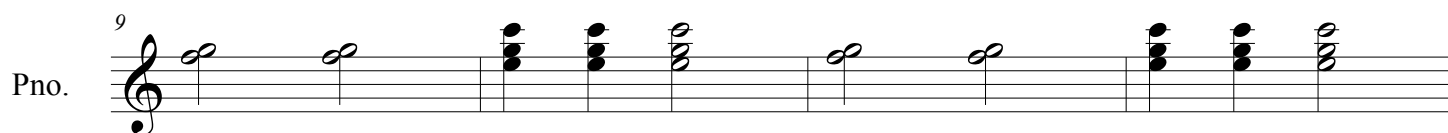
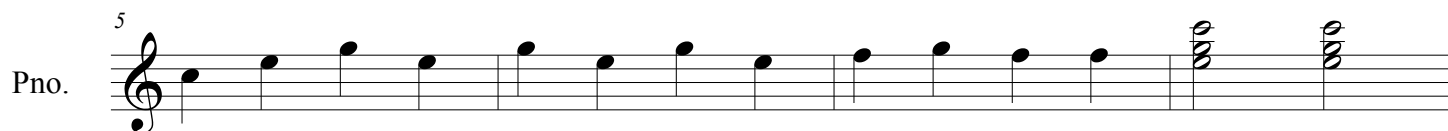
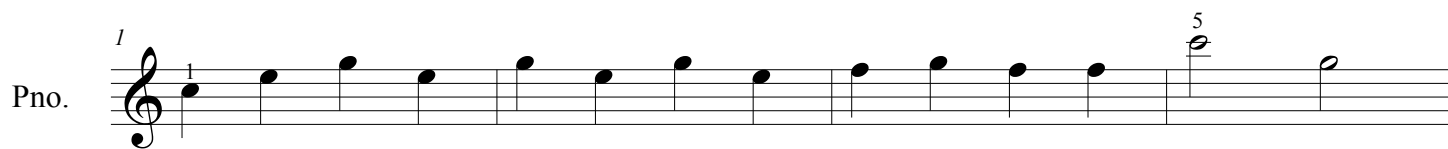
Come and taste the ice - cream, come and hear the mus - ic.

Pno.

Car - ni - val, car - ni - val on a sun - ny Sun - day!

TEACHER DUET

Carnival



Happy Santa Claus

PLAY THIS TUNE USING ONLY THE
BASS CLEF NOTE C THROUGH G

Doreen Hall

Piano

Why so hap - py San - ta Claus? Why so glad to - day?

Pno.

Can you play a Christ - mas song a real - ly ea - sy way?

Pno.

Can you tell me that this song's the ea - si est you know?

Pno.

Lis - ten as you sing a - long, it has just five notes.

PRACTICE QUARTER NOTES, HALF NOTES AND WHOLE
NOTES. COUNT AS YOU PLAY.

A Cloudy Day



Doreen Hall

Piano

1

The skies are gray. No sun to - day.

5

Pno.

It hides a - way The skies are gray on a

9

Pno.

cloud-y cloud - y day. In I must stay

13

Pno.

on a cloud - y day. gloom - y cloud - y day.

TEACHER DUET

A Cloudy Day

17

Pno.

Measures 17-20: Treble clef has chords at measures 17 and 19, and single notes at 18 and 20. Bass clef has whole rests.

21

Pno.

Measures 21-24: Treble clef has chords at measures 21 and 23, and single notes at 22 and 24. Bass clef has whole rests.

25

Pno.

Measures 25-28: Treble clef has chords at measures 25 and 27, and single notes at 26 and 28. Bass clef has whole rests.

29

Pno.

Measures 29-32: Treble clef has chords at measures 29 and 31, and single notes at 30 and 32. Bass clef has whole rests.

Note Speller 3

WRITE IN THE BASS CLEF NOTE NAMES

WRITE Q FOR QUARTER NOTE
WRITE H FOR HALF NOTE
WRITE W FOR WHOLE NOTE.

Q Q H W

C D E E

5

9

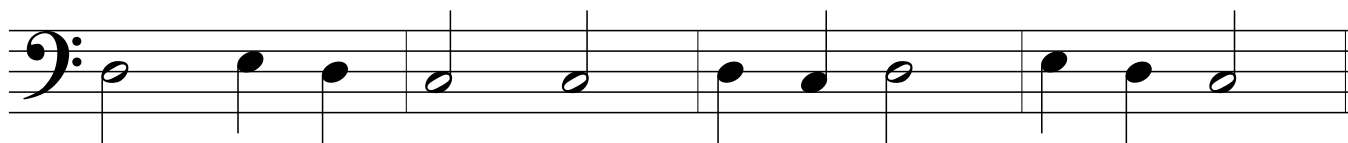
13

17

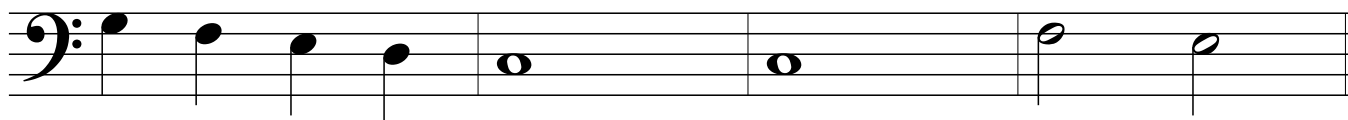
22

Note Speller 3

26



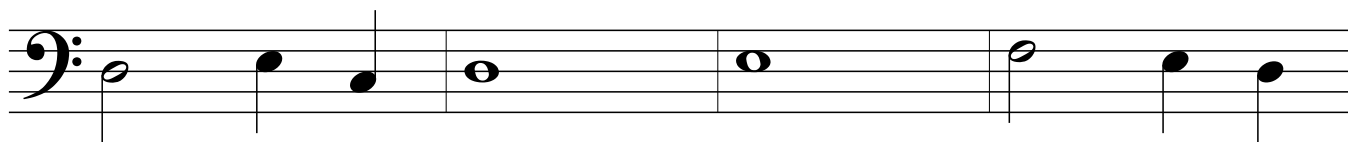
30



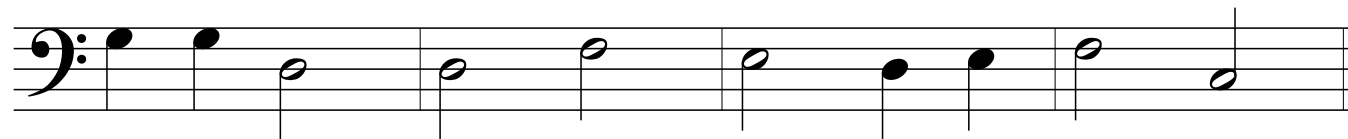
34



38



42



YOU HAVE BEEN PLAYING IN 4/4 TIME
SIGNATURE

THE TIME SIGNATURE TELLS US HOW TO
COUNT THE MUSIC.

THE TOP 4 LETS US KNOW THERE ARE 4
BEATS PER MEASURE.

THE BOTTOM 4 MEANS THE QUARTER
NOTE RECEIVES ONE BEAT.

RHYTHMIC PRACTICE-PART A

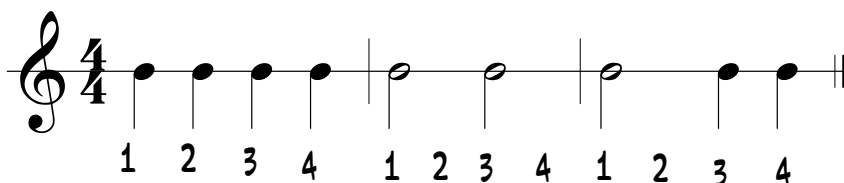
A NEW WAY TO COUNT.

QUARTER NOTES AND
HALF NOTES.

EACH QUARTER NOTE RECEIVES
ONE COUNT. HALF NOTES
RECEIVE TWO COUNTS.

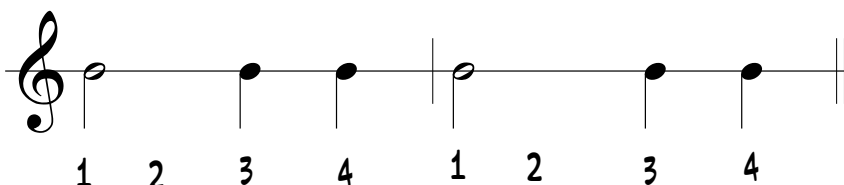
HERE IS A NEW WAY TO COUNT.
COUNT TO 4 BECAUSE IN 4/4 TIME
SIGNATURE THERE ARE FOUR BEATS PER
MEASURE.

Piano



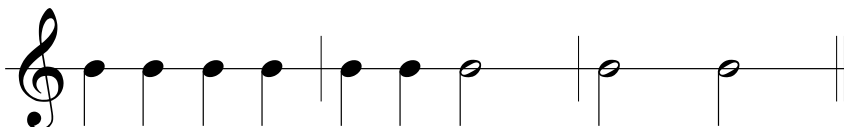
CLAP AND COUNT
QUARTER NOTES AND
HALF NOTES.

Pno.

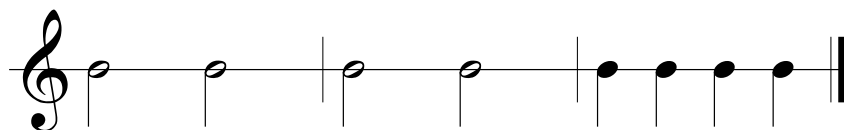


WRITE IN THE BEATS

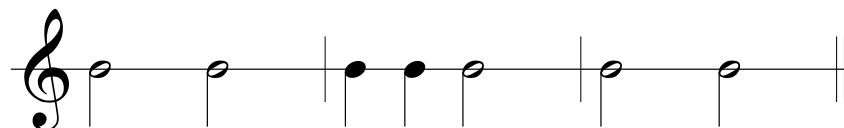
Pno.

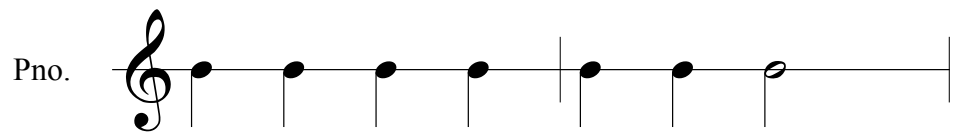
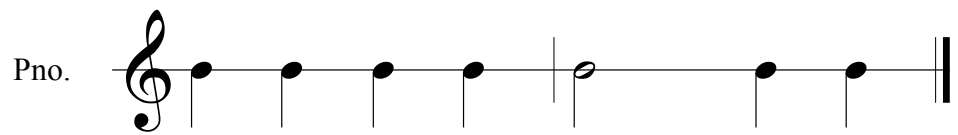


Pno.



Pno.



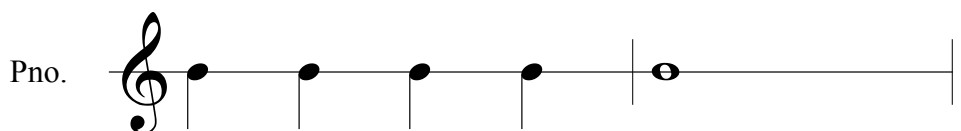


THE WHOLE NOTE
RECEIVES 4 BEATS.

COUNT TO 4 WHEN
PLAYING WHOLE NOTES.



PRACTICE COUNTING THE
WHOLE NOTES.



COUNTING ALL THE THE BEATS IN THE MEASURE IS A BETTER WAY TO COUNT.
IT HELPS YOU TO KNOW WHERE YOU ARE WITHIN THE MEASURE WHILE PLAYING.
THIS IS THE WAY ACCOMPLISHED MUSICIANS COUNT THEIR MUSIC.